

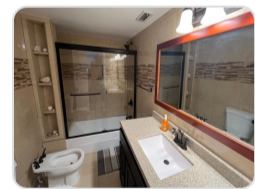
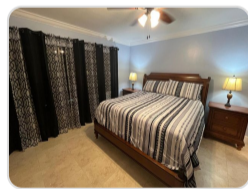
PORT OF CALL VILLAS

\$2,200



Address:	PORT OF CALL VILLAS, Bahama Terrace Yacht & Country Club
City:	Grand Bahama/Freeport
MLS#:	67789
Lot Size:	43,560 sq. ft.
Listing No:	R8
Beds:	2
Baths:	2
Living Area:	2,100 sq. ft.
Year Built:	2002

PROPERTY GALLERY



PROPERTY DETAILS

Enjoy a gracious island lifestyle in this fantastic 2-bedroom, 2.5-bathroom oceanfront condo in the exclusive gated beachfront of Port of Call Villas. A rare, modern concept of spacious condominiums that offer meticulous attention to design and craftsmanship. These luxurious units boast 10 ceilings, 8 doors, cove lighting, custom vinyl windows, and top-of-the-line kitchens and bathrooms. Boasting expansive views of the turquoise Atlantic, this spacious 2-bed, 2.5-bath condo has much to offer. Among the many amenities are 10 ft. tray ceilings, recessed lighting, granite countertops, and complimentary black appliances. Exquisitely furnished and outfitted, the unit is available for long-term rental.

AGENT DETAILS



Grand Bahama Office

 [\(242\) 351-6445](tel:(242)351-6445)

 gbinfo@moskorealty.com

GBOffice
Grand Bahama Island
(242) 351-6449
(242) 351-6445



The Bahamas Real Estate Association is not responsible for the accuracy of the information listed above. The data relating to the real estate for sale or lease on this website comes in part from the Internet Data Exchange Program (IDX) and the Bahamas MLS, and is provided here for consumer's personal, non-commercial use. It may not be used for any purpose other than to identify prospective properties consumers may be interested in purchasing or leasing. Real Estate listings held in brokerage firms other than the office owning this website are marked with the IDX logo on the short inquiry. Data provided is deemed reliable but not guaranteed. This information is protected by copyright and all rights reserved. This property is shown courtesy of The Bahamas MLS.

© 2026 Mosko Realty. All rights reserved.

Generated on: 07/04/2026 02:51:37 PM