

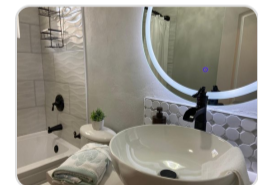
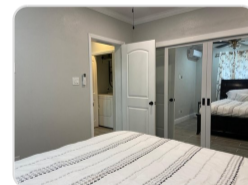
## 13 JASMINE CLOSE, WEST BAY STREET

**\$2,000**



<b>Address:</b>	13 JASMINE CLOSE, West Bay Street
<b>City:</b>	New Providence/Paradise Island
<b>MLS#:</b>	67711
<b>Lot Size:</b>	8,000 sq. ft.
<b>Listing No:</b>	R8
<b>Beds:</b>	1
<b>Baths:</b>	1
<b>Living Area:</b>	900 sq. ft.
<b>Year Built:</b>	2025

### PROPERTY GALLERY



### PROPERTY DETAILS

This brand-new, modern apartment is tastefully done and giving sophistication with neutral shades, earth toned tiles, granite countertops and a tropical backsplash in the kitchen. It is available fully furnished and has everything needed for a professional or couple including AC, a porch and a private front lawn on the exterior. Ideally located near to the beach, Old Fort Bay, the international airport, Lyford Cay, private schools and much more. Water and Internet included. Available July 1st! Call today!

### AGENT DETAILS



### Nassau/New Providence Office

 [\(242\) 362-5219](tel:(242)362-5219)

 [\(242\) 362-5219](tel:(242)362-5219)

 [info@moskorealty.com](mailto:info@moskorealty.com)



The Bahamas Real Estate Association is not responsible for the accuracy of the information listed above. The data relating to the real estate for sale or lease on this website comes in part from the Internet Data Exchange Program (IDX) and the Bahamas MLS, and is provided here for consumer's personal, non-commercial use. It may not be used for any purpose other than to identify prospective properties consumers may be interested in purchasing or leasing. Real Estate listings held in brokerage firms other than the office owning this website are marked with the IDX logo on the short inquiry. Data provided is deemed reliable but not guaranteed. This information is protected by copyright and all rights reserved. This property is shown courtesy of The Bahamas MLS.

© 2026 Mosko Realty. All rights reserved.

Generated on: 06/26/2026 03:50:25 PM