

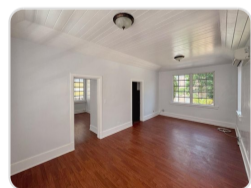
## UNION COURT

**\$1,300**



<b>Address:</b>	VICTORIA AVENUE,Downtown
<b>City:</b>	New Providence/Paradise Island
<b>MLS#:</b>	66967
<b>Lot Size:</b>	0 sq. ft.
<b>Listing No:</b>	C-46
<b>Beds:</b>	n/a
<b>Baths:</b>	n/a
<b>Living Area:</b>	0 sq. ft.
<b>Year Built:</b>	n/a
<b>Status:</b>	For Rentonly

## PROPERTY GALLERY



## PROPERTY DETAILS

A short stroll from the heart of downtown Nassau and minutes by foot from Princess Margaret and Doctor's Hospitals with quick access from the East via Dowdeswell Street. 2nd level premises at 500 square feet. Premises fully secure with the security officer on guard from 7 am to 8 pm, Monday through Friday, Parking, Property manager on site. Parking with the unit for one along with clients parking available. B.E.C. charges are metered. Price includes CAM, RPT, and building insurance.

## AGENT DETAILS



## Nassau/New Providence Office

 [\(242\) 362-5219](tel:(242)362-5219)

 [\(242\) 362-5219](tel:(242)362-5219)

 [info@moskorealty.com](mailto:info@moskorealty.com)



The Bahamas Real Estate Association is not responsible for the accuracy of the information listed above. The data relating to the real estate for sale or lease on this website comes in part from the Internet Data Exchange Program (IDX) and the Bahamas MLS, and is provided here for consumer's personal, non-commercial use. It may not be used for any purpose other than to identify prospective properties consumers may be interested in purchasing or leasing. Real Estate listings held in brokerage firms other than the office owning this website are marked with the IDX logo on the short inquiry. Data provided is deemed reliable but not guaranteed. This information is protected by copyright and all rights reserved. This property is shown courtesy of The Bahamas MLS.

© 2026 Mosko Realty. All rights reserved.

Generated on: 06/04/2026 03:22:39 AM