

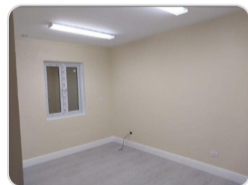
STAPLEDON EXECUTIVE SUITE, STAPLEDON GARDENS

\$3,250



Address:	STAPLEDON EXECUTIVE SUITE, Stapledon Gardens
City:	New Providence/Paradise Island
MLS#:	66610
Lot Size:	0 sq. ft.
Listing No:	C-63
Beds:	n/a
Baths:	n/a
Living Area:	0 sq. ft.
Year Built:	n/a
Status:	For Rentonly

PROPERTY GALLERY



PROPERTY DETAILS

Discover an exceptional business opportunity in the highly sought-after Stapledon Gardens community. This spacious 1221 sq. ft. unit is perfectly suited for a professional office, retail store, or service-oriented business. The property features an open, versatile layout that can be easily customized to meet your operational needs, with ample storage space and comfortable client areas. Conveniently located in a thriving, high-traffic area of Western Nassau, it offers excellent visibility, easy access to major roads, generous parking, and strong long-term growth potential. The monthly rental rate shown includes CAM.

AGENT DETAILS



Nassau/New Providence Office

📞 [\(242\) 362-5219](tel:(242)362-5219)

📞 [\(242\) 362-5219](tel:(242)362-5219)

✉️ info@moskorealty.com



The Bahamas Real Estate Association is not responsible for the accuracy of the information listed above. The data relating to the real estate for sale or lease on this website comes in part from the Internet Data Exchange Program (IDX) and the Bahamas MLS, and is provided here for consumer's personal, non-commercial use. It may not be used for any purpose other than to identify prospective properties consumers may be interested in purchasing or leasing. Real Estate listings held in brokerage firms other than the office owning this website are marked with the IDX logo on the short inquiry. Data provided is deemed reliable but not guaranteed. This information is protected by copyright and all rights reserved. This property is shown courtesy of The Bahamas MLS.

© 2026 Mosko Realty. All rights reserved.

Generated on: 06/04/2026 01:15:46 AM