

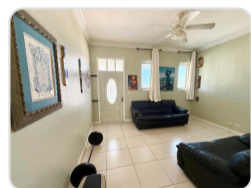
PICK'S CONDO

\$190,000



Address:	PICK'S CONDO,Carmichael Road
City:	New Providence/Paradise Island
MLS#:	66462
Lot Size:	0 sq. ft.
Listing No:	R1029
Beds:	1
Baths:	1
Living Area:	770 sq. ft.
Year Built:	2013
Status:	For Saleonly

PROPERTY GALLERY



PROPERTY DETAILS

This southern executive condo features one bedroom and one bathroom and was designed for comfort. With over 700 sq. ft of interior space, this spacious unit lacks nothing with a ceiling height of just under 11 feet. The open floor plan allows the flow of light from every direction through hurricane-impact windows. The generous master bedroom comfortably supports full-size furnishings and features a large closet and bathroom with a standup shower and tub. Sold partially furnished, this charming private, second floor hideaway sits in a small gated complex and includes a covered patio, a full-backup generator and two-car parking.

AGENT DETAILS



Nassau/New Providence Office

📱 [\(242\) 362-5219](tel:(242)362-5219)

☎ [\(242\) 362-5219](tel:(242)362-5219)

✉ info@moskorealty.com



The Bahamas Real Estate Association is not responsible for the accuracy of the information listed above. The data relating to the real estate for sale or lease on this website comes in part from the Internet Data Exchange Program (IDX) and the Bahamas MLS, and is provided here for consumer's personal, non-commercial use. It may not be used for any purpose other than to identify prospective properties consumers may be interested in purchasing or leasing. Real Estate listings held in brokerage firms other than the office owning this website are marked with the IDX logo on the short inquiry. Data provided is deemed reliable but not guaranteed. This information is protected by copyright and all rights reserved. This property is shown courtesy of The Bahamas MLS.

© 2026 Mosko Realty. All rights reserved.

Generated on: 06/03/2026 09:44:07 PM