



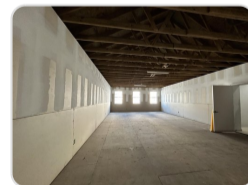
BAY AND PARLIAMENT STREET, DOWNTOWN

\$2,980



Address:	BAY AND PARLIAMENT STREET, Downtown
City:	New Providence/Paradise Island
MLS#:	65835
Lot Size:	0 sq. ft.
Listing No:	C-142
Beds:	n/a
Baths:	n/a
Living Area:	0 sq. ft.
Year Built:	n/a
Status:	For Rentonly

PROPERTY GALLERY



PROPERTY DETAILS

Secure a presence in the heart of Downtown Nassau with this 978 sq. ft. upper-floor shell space at Bay Street and Parliament Street, just west of Parliament Square. Ready to be built out to suit your business, the unit offers a flexible layout ideal for a professional office or select retail use in a well-located, high-visibility commercial building. Please note that food, beverage, and nightlife uses are not permitted. The monthly rental rate includes CAM, with base rent calculated at \$19.16 per sq. ft. per annum plus CAM at \$17.40 per sq. ft. per annum for the 978 sq. ft. unit.

AGENT DETAILS



Nassau/New Providence Office

 [\(242\) 362-5219](tel:(242)362-5219)

 [\(242\) 362-5219](tel:(242)362-5219)

 info@moskorealty.com



The Bahamas Real Estate Association is not responsible for the accuracy of the information listed above. The data relating to the real estate for sale or lease on this website comes in part from the Internet Data Exchange Program (IDX) and the Bahamas MLS, and is provided here for consumer's personal, non-commercial use. It may not be used for any purpose other than to identify prospective properties consumers may be interested in purchasing or leasing. Real Estate listings held in brokerage firms other than the office owning this website are marked with the IDX logo on the short inquiry. Data provided is deemed reliable but not guaranteed. This information is protected by copyright and all rights reserved. This property is shown courtesy of The Bahamas MLS.

© 2026 Mosko Realty. All rights reserved.

Generated on: 06/04/2026 03:11:25 AM