

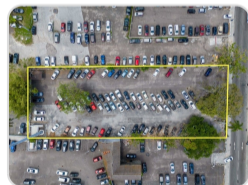
## PARKING LOT ELIZABETH AVENUE, DOWNTOWN

**\$2,495,000**



<b>Address:</b>	PARKING LOT ELIZABETH AVENUE, Downtown
<b>City:</b>	New Providence/Paradise Island
<b>MLS#:</b>	55909
<b>Lot Size:</b>	31,234 sq. ft.
<b>Listing No:</b>	C-190
<b>Beds:</b>	n/a
<b>Baths:</b>	n/a
<b>Living Area:</b>	0 sq. ft.
<b>Year Built:</b>	n/a
<b>Status:</b>	For Sale only

### PROPERTY GALLERY



### PROPERTY DETAILS

Large commercial lot in Downtown Nassau. Currently used as a parking lot with spaces for 100 cars. Continue with parking space rentals or develop to suit your commercial needs.

### AGENT DETAILS



## Nassau/New Providence Office

 [\(242\) 362-5219](tel:(242)362-5219)

 [\(242\) 362-5219](tel:(242)362-5219)

 [info@moskorealty.com](mailto:info@moskorealty.com)



The Bahamas Real Estate Association is not responsible for the accuracy of the information listed above. The data relating to the real estate for sale or lease on this website comes in part from the Internet Data Exchange Program (IDX) and the Bahamas MLS, and is provided here for consumer's personal, non-commercial use. It may not be used for any purpose other than to identify prospective properties consumers may be interested in purchasing or leasing. Real Estate listings held in brokerage firms other than the office owning this website are marked with the IDX logo on the short inquiry. Data provided is deemed reliable but not guaranteed. This information is protected by copyright and all rights reserved. This property is shown courtesy of The Bahamas MLS.

© 2026 Mosko Realty. All rights reserved.

Generated on: 06/03/2026 09:56:04 PM