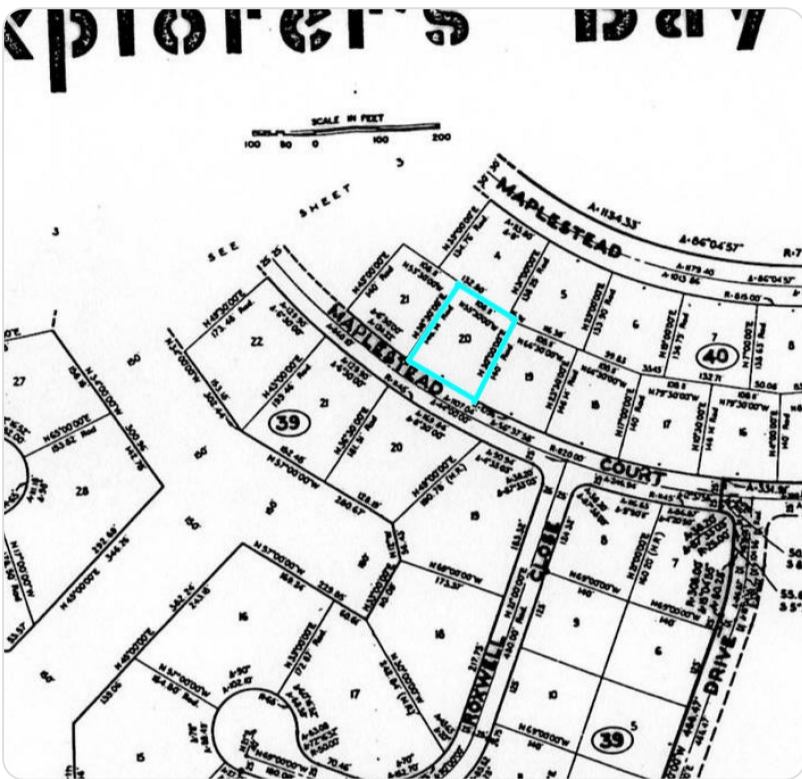


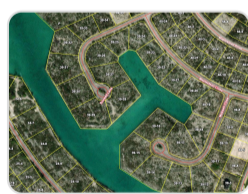
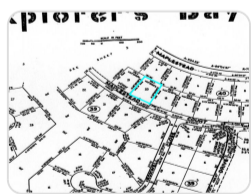
## 20 MAPLESTEAD CLOSE, EXPLORE

**\$35,000**



<b>Address:</b>	20 Maplestead Close, Explore
<b>City:</b>	Other Islands
<b>MLS#:</b>	59936
<b>Lot Size:</b>	17,859 sq. ft.
<b>Listing No:</b>	6913
<b>Beds:</b>	0
<b>Baths:</b>	0
<b>Living Area:</b>	0 sq. ft.
<b>Year Built:</b>	n/a
<b>Status:</b>	active

### PROPERTY GALLERY



### PROPERTY DETAILS

This is your chance to build the investment property starting at a low price for this multi-family lot. Measuring 17,720 sq. ft., it gives you a lot of space to work with. This lot is 15 minutes to the airport/downtown area and 10 minutes to the beaches. Call us today to get a kick start on your investment.

### AGENT DETAILS



**Mary Mosko**

 [242-351-6446](tel:242-351-6446)

 [242-351-6445](tel:242-351-6445)

 [mary@moskorealty.com](mailto:mary@moskorealty.com)

---

Location : Freeport/Lucaya, Grand Bahama

Office : 242-351-6445

Office : 242-351-6446

Office : 242-351-6447

Fax : 242-351-6449

Email : [mary@moskorealty.com](mailto:mary@moskorealty.com)



The Bahamas Real Estate Association is not responsible for the accuracy of the information listed above. The data relating to the real estate for sale or lease on this website comes in part from the Internet Data Exchange Program (IDX) and the Bahamas MLS, and is provided here for consumer's personal, non-commercial use. It may not be used for any purpose other than to identify prospective properties consumers may be interested in purchasing or leasing. Real Estate listings held in brokerage firms other than the office owning this website are marked with the IDX logo on the short inquiry. Data provided is deemed reliable but not guaranteed. This information is protected by copyright and all rights reserved. This property is shown courtesy of The Bahamas MLS.