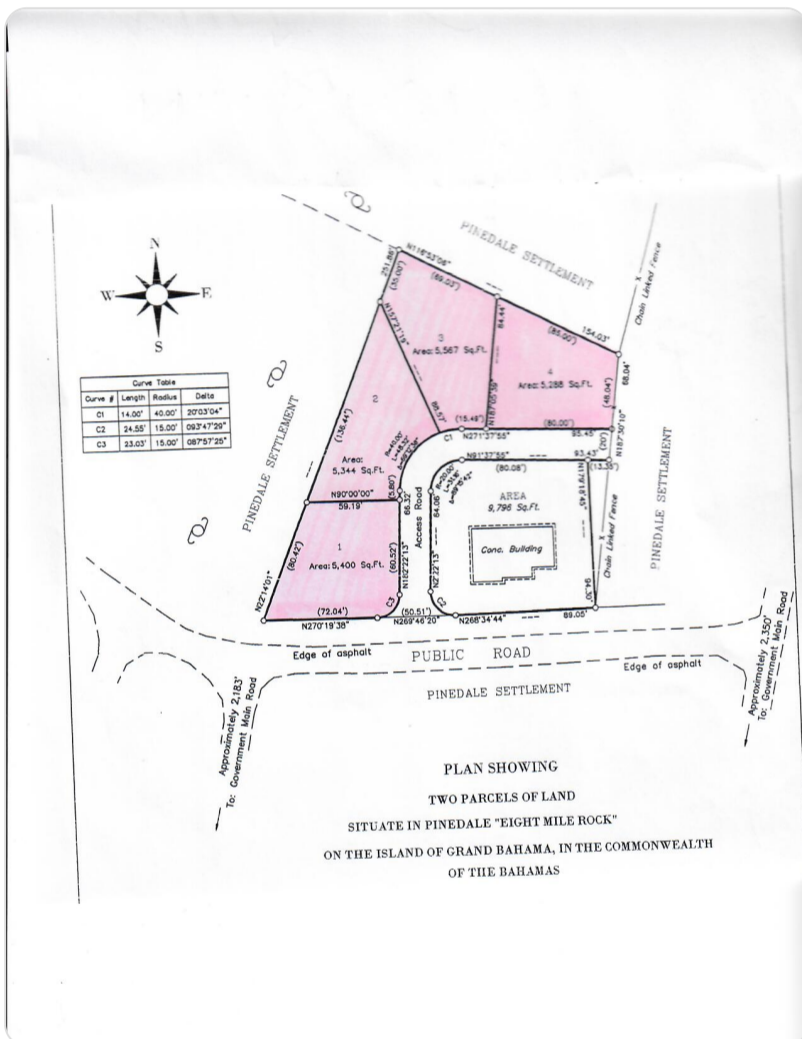


PINEDALE, GRAND BAHAMA

\$39,000



Address: Pinedale, Eight Mile Rock, Grand Bahama

City: Grand Bahama/Freeport

Lot Size: 21,599 sq. ft.

Listing No: 6461

Beds: n/a

Baths: n/a

Living Area: 0 sq. ft.

Year Built: n/a

Status: active

PROPERTY GALLERY



PROPERTY DETAILS

Pinedale is a community in the Eight Mile Rock subdivision approximately fifteen minutes outside of Freeport. This quiet residential area is an ideal place to build a home for those wishing to be in close proximity to the city but yet outside the city. These four lots total 21,599 sq. ft., perfect for a small development and, all utilities are in place. Lot 1 - 5,400 Sq. Ft. Lot 2 - 5,344 Sq. Ft. Lot 3 - 5,567 Sq. Ft. Lot 4 - 5,288

Sq. Ft. Call Mosko Realty today for more information! 242-351-6445 or from the U.S., Canada/Europe 305-433-7595 or you can email us anytime gbinfo@moskorealty.com.

AGENT DETAILS



Violet Wright

 [242-457-9700](tel:242-457-9700)

 [242-351-6445](tel:242-351-6445)

 violetwright@moskorealty.com

Office Assistant

Location : Executive Office Center, Suite 5 Freeport, Bahamas

Office : 1-242-351-6445

Fax : 1-242-351-6449

Email : violetwright@moskorealty.com



The Bahamas Real Estate Association is not responsible for the accuracy of the information listed above. The data relating to the real estate for sale or lease on this website comes in part from the Internet Data Exchange Program (IDX) and the Bahamas MLS, and is provided here for consumer's personal, non-commercial use. It may not be used for any purpose other than to identify prospective properties consumers may be interested in purchasing or leasing. Real Estate listings held in brokerage firms other than the office owning this website are marked with the IDX logo on the short inquiry. Data provided is deemed reliable but not guaranteed. This information is protected by copyright and all rights reserved. This property is shown courtesy of The Bahamas MLS.

© 2026 Mosko Realty. All rights reserved.

Generated on: 06/03/2026 09:49:19 PM