



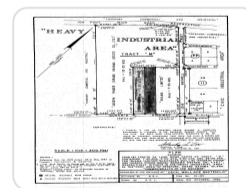
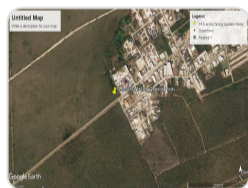
# FOR SALE 7.5 ACRES IN THE CIVIC INDUSTRIAL AREA OF GRAND BAHAMA

**\$1,000,000**



<b>Address:</b>	Part of Tract M, Civil Industrial Area
<b>City:</b>	Grand Bahama/Freeport
<b>Lot Size:</b>	319,500 sq. ft.
<b>Listing No:</b>	6370
<b>Beds:</b>	n/a
<b>Baths:</b>	n/a
<b>Living Area:</b>	0 sq. ft.
<b>Year Built:</b>	n/a
<b>Status:</b>	active

## PROPERTY GALLERY



## PROPERTY DETAILS

These 7.5 acres on Queens Highway extend North toward the Airport Road and are perfect location to establish any kind of light industry business. It is possible to subdivide in to smaller acreage should you need less space for what you have in mind. Just call for an appointment to discuss your needs and get more information on this exclusive offer. Please call Mosko realty at 242-351-6445 or from the US, Canada and Europe you can dial 305-433-7595. "We bring families and homes together"

## AGENT DETAILS



**Mary Mosko**

 [242-351-6446](tel:242-351-6446)

 [242-351-6445](tel:242-351-6445)

 [mary@moskorealty.com](mailto:mary@moskorealty.com)

---

Location : Freeport/Lucaya, Grand Bahama

Office : 242-351-6445

Office : 242-351-6446

Office : 242-351-6447

Fax : 242-351-6449

Email : [mary@moskorealty.com](mailto:mary@moskorealty.com)



The Bahamas Real Estate Association is not responsible for the accuracy of the information listed above. The data relating to the real estate for sale or lease on this website comes in part from the Internet Data Exchange Program (IDX) and the Bahamas MLS, and is provided here for consumer's personal, non-commercial use. It may not be used for any purpose other than to identify prospective properties consumers may be interested in purchasing or leasing. Real Estate listings held in brokerage firms other than the office owning this website are marked with the IDX logo on the short inquiry. Data provided is deemed reliable but not guaranteed. This information is protected by copyright and all rights reserved. This property is shown courtesy of The Bahamas MLS.